

# One solution, **tailored combinations** for urinalysis



Unlock the  
**power of two..**

**UNAMAX**

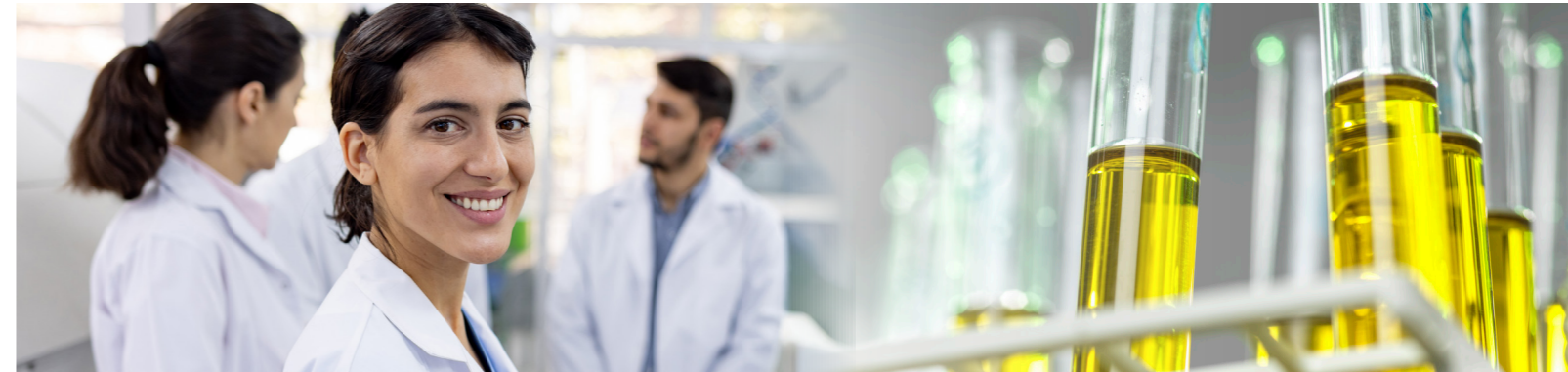
**UNAMAX** is A. Menarini Diagnostics fully automated urine chemistry analyzer, designed for maximum productivity and improved accuracy. It measures up to 14 chemical parameters (including ascorbic acid, creatinine, microalbumin, and calcium) plus 5 physical parameters via a dedicated module.

With a throughput of 360 samples/hour, **UNAMAX** features a 10.4-inch touchscreen showing real strip images, automatic RFID rack recognition for trace-



ability, and constant temperature control to ensure reliable results.

**...and shape flexibility**  
into urinalysis



**UNAMAX** and **sedimax conTRUST PRO** can be seamlessly combined to deliver a fully automated urinalysis solution.

Together, they transform into  
**a true urinalysis workstation** - boosting throughput and ensuring greater analytical accuracy in routine testing.

The **modular approach** offers **a range of configurations** designed to maximize efficiency, enhance productivity, and simplify daily operations.

Thanks to its high level of automation, the system streamlines laboratory workflows, enabling **true walkaway operation** and reducing hands-on time.

**sedimax**  
*conTRUST PRO*

**sedimax conTRUST PRO** is the latest A. Menarini Diagnostics urine sediment analyzer, offering fully automated sample preparation and evaluation.

The new design includes optimized rack orientation, a STAT position, and a dedicated aisle for smoother workflow and multiple-analyzer connectivity.

It combines bright field and phase contrast microscopy in a single optical system, capturing 15 high-quality images per sample with a dual-focusing digital camera. A neural network evaluates the images, ensuring greater accuracy. Phase contrast



technology enhances particle detection and morphological detail, improving recognition rates over bright field microscopy.

# Our Modular Solution Tailored to Your Workflow



## **sediMAX** Output Buffer

Expands the parking area to hold up to 40 racks with 2 modules connected

## **sediMAX** conTRUST PRO

Get the full picture with **sediMAX conTRUST PRO**, our automated sediment analyzer:

Detects a wide range of parameters

Delivers high throughput

Utilizes cutting-edge technology that integrates bright field and phase contrast microscopy

## **UNAMAX**

Stay ahead in urinalysis with **UNAMAX** automated urine analyzer:

Offers a broad range of testing options

Ensures high throughput

Features advanced CIS technology

## **ST-05** DECAPPER

Automatic cap removal for safer sample handling

Barcode/RFID scanning function

Up to 35- rack capacity with 2 modules connected

## Maximize Productivity and Optimize Workflow with Our New Modular Solution

Mix and match **UNAMAX** and **sediMAX conTRUST PRO** based on your needs. Our new solution is designed to handle high-volume routines and achieve greater throughput with advanced automation.

# Modular efficiency for urinalysis

Tailored to  
**your workflow**



## **sedimax Input Buffer**

- **Capacity:** 20 racks per module
- 2 modules can be connected together
- Connects to sedimax



## **ST Input Buffer**

- **Capacity:** 20 racks
- Barcode/RFID scanning function
- High throughput
- Connects to UNAMAX



## **ST-05 DECAPPER**

- **Capacity:** 20 racks (module A), 15 racks (module B)
- **Throughput:** 300 tubes/hour  
2 modules can be connected together to reach a throughput of up to 600 tubes/hour
- Automatic cap removal
- Barcode/RFID scanning function
- Connects both to UNAMAX and sedimax



## **sedimax Output Buffer**

- **Capacity:** 20 racks per module
- 2 modules can be connected together
- Connects to sedimax

## ■ **Benchtop configurations**



The system allows connection of up to **4 UNAMAX** units and **3 sedimax conTRUST PRO** units.

## ■ **Standing configurations**



Up to **4 UNAMAX** units and **3 sedimax conTRUST PRO** units can be connected within the system.

## ■ **Corner configurations - benchtop/standing**



Up to **4 UNAMAX** units and **3 sedimax conTRUST PRO** units can be interconnected.  
A 90° or 270° corner module can be inserted between **UNAMAX** analyzers or decapper.



## List of products and codes

52079	UNAMAX
59093	SediMAX ConTRUST PRO
57711	UNAMAX SZ bridge
59244	SediMAX Bridge
59352	ST-05 Decapper A
59457	ST-05 Decapper B
57712	UNAMAX ST Input buffer
59340	SediMAX Input buffer
59241	Output buffer
59239	Support panels set
59218	Instrument chain kit
59534	SediMAX bridge + output buffer cabinet
59533	UNAMAX SZ bridge cabinet
59531	SediMAX bridge cabinet
59532	UNAMAX cabinet
59535	SediMAX output cabinet
59530	UNAMAX input cabinet
59528	SediMAX cabinet
59582	sediMAX input buffer cabinet
59529	ST-05 decapper A cabinet
59551	ST-05 decapper B cabinet
59796	sediMAX I/O double buffer cabinet
59794	IPU full set
59362	Bridge 270° UNAMAX + cabinet
59361	Bridge 90° UNAMAX + cabinet
59454	Panel set decapper
59581	IPU monitor + keyboard holder

Our new solution is available in the following A.Menarini Diagnostics countries:

Austria: <https://www.menarinidiagnostics.at>  
 Benelux: <https://www.menarinidiagnostics.be>  
 France: <https://www.menarinidiagnostics.fr>  
 Greece: <https://www.menarinidiagnostics.gr>  
 Italy: <https://www.menarinidiagnostics.it>  
 Portugal: <https://www.menarinidiag.pt>  
 Spain: <https://www.menarinidiag.es>  
 UK: <https://www.menarinidiag.co.uk>