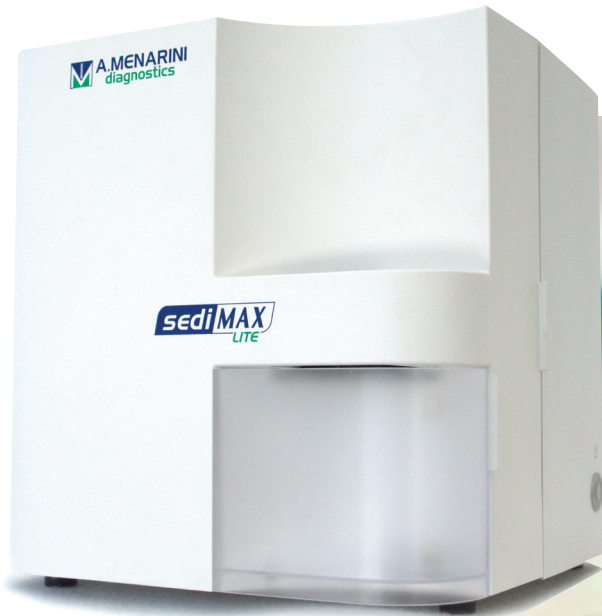


sediMAX
LITE

Semi-automated urine sediment analyzer



Your best assistant
Small, simple, reliable

Semi-automated urine sediment analyzer

Small, simple, reliable

sediMAX LITE is a professional semi-automated urine microscopy analyzer, which relies on the **gold standard method** while eliminating the most time-consuming and operator-dependent procedures in laboratories performing manual microscopy.

It improves **accuracy, reproducibility, safety and productivity**, by producing whole view field images of urine sediment and automatically classifying and counting particles through the Artificial Intelligence-based Evaluation Module (AIEM).

sediMAX LITE requires a **very low sample volume** and is a highly effective tool for small labs, emergency departments or as a back-up system for automated urine sediment analyzers.

sediMAX LITE can also analyze **body fluid samples***.

Key features

URINE measurement mode

- No consumable reagents; only single-use cuvettes and pipette tips needed
- Up to 60 tests/hour throughput

Key features

BODY FLUID measurement mode*

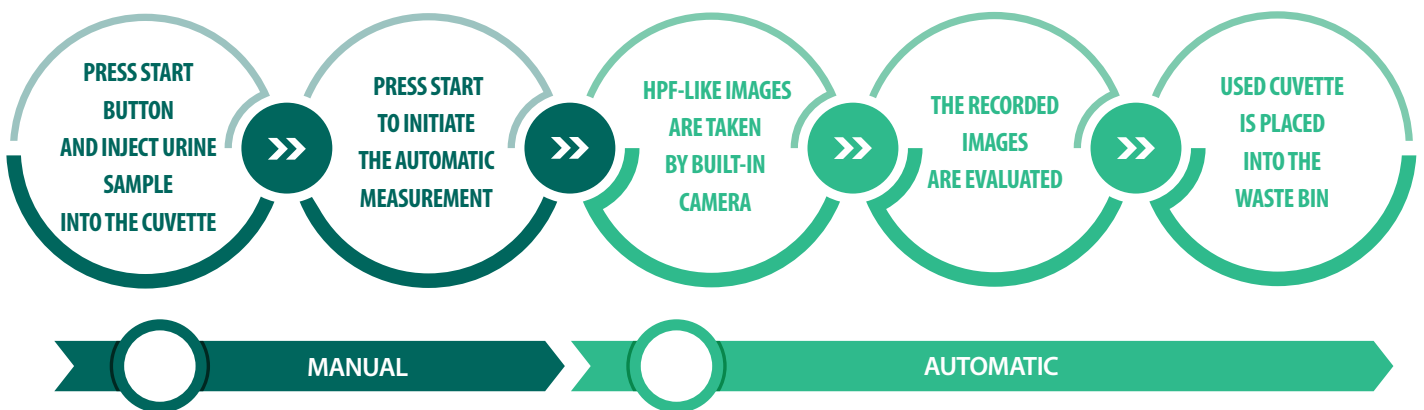
- Analysis of five different fluids
- Several particles detected; white blood cells differentiation also included



*Research Use Only. Not for use in diagnostic procedures.

sediMAX LITE measurement process

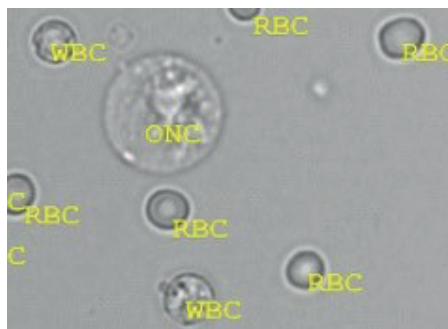
sediMAX LITE is **easy-to-use** and **minimal training** is needed.



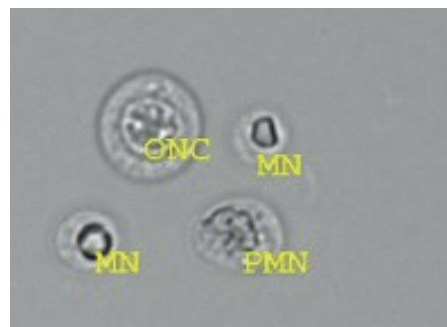
Body fluid measurement*

The workflow of body fluid mode includes an additional step through a staining needed to reveal white blood cell differentiation into mononuclear (MN%) and polymorphonuclear white blood cells (PMN%). No white blood cell differentiation results are available without the stained measurement; however, all other parameters are detected.

Unstained sample



Stained sample



sediMAX LITE benefits

- The user-friendly and flexible software allows easy handling of data and validation of results
- Connectivity to laboratory middleware/LIS
- Cost-effective operation without liquid reagents or calibrators
- Manual microscopy mode: real-time live view of any view field of the cuvette to see moving microorganisms

Technical specifications



Cuvette volume	175±5 µL
Throughput	Up to 60 samples/hour (depending on the operator)
Cuvette package	600 (12 cuvette holders/box, 50 cuvettes/cuvette holder)
Max cuvette load	50 pcs (1 cuvette holder)
Sedimentation	On board. 2000 RPM for 10 seconds per sample
Number of images per sample	15 (urine) 45-45 (unstained-stained body fluids*)
Final result	Particle concentration (/HPF or /µL) & identified category
Parameters identified (urine)	Red Blood Cells (RBC); White Blood Cells (WBC); WBC Clumps (WBCc); Hyaline Casts (HYA); Pathological Casts (PAT); Squamous Epithelial Cells (EPI); Non-squamous Epithelial Cells (NEC); Bacteria (BAC); Bacteria Rods (BACr); Bacteria Cocci (BACc); Yeast (YEA); Crystals (CRY); Calcium-oxalate monohydrate (CaOxm), Calcium-oxalate dihydrate (CaOxd), Uric acid (URI), Triple phosphate (TRI); Mucus (MUC); Sperm (SPRM). Urinary Tract Infection flag (UTI). <i>Further classes for manual sub-classification are also available.</i>
Parameters identified (body fluids)*	Red blood cells (RBC); White blood cells (WBC); Mononuclear white blood cells (MN%); Polymorphonuclear white blood cells (PMN%); Other nucleated cells (ONC). White blood cell clumps flag (WBCc flag), Bacteria flag (BAC flag).
Body fluids available*	Cerebrospinal fluid (Liquor), Ascitic fluid, Pleural fluid, Pericardial fluid, Continuous ambulatory peritoneal dialysis (CAPD).
Memory	Up to 10000 urine measurements (with all the recorded images)**
Waste drawer capacity	50 used cuvettes
Line voltage	100-240 VAC, 50-60 Hz, Max. 8 A
Size	305 mm (W) × 315 mm (D) × 325 mm (H)
Weight	10 kg

List of products and codes

47218	sediMAX LITE
39052	sediMAX cuvettes (1x600)
37036	KOVA Liqua-Trol liquid controls
57855	Body fluids stain*

*Research Use Only. Not for use in diagnostic procedures

**1000 when Body Fluid RUO mode is activated

HEADQUARTER

A. Menarini Diagnostics S.r.l.
Via dei Sette Santi, 3 - 50131
Florence, Italy
Tel. +39. 055. 56801



Visit www.menariniagnostics.com for product availability in your country and ordering information